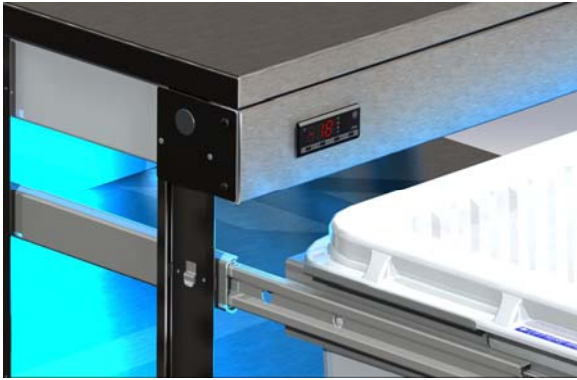
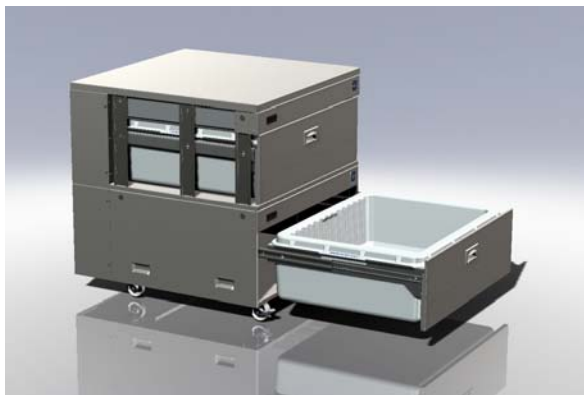
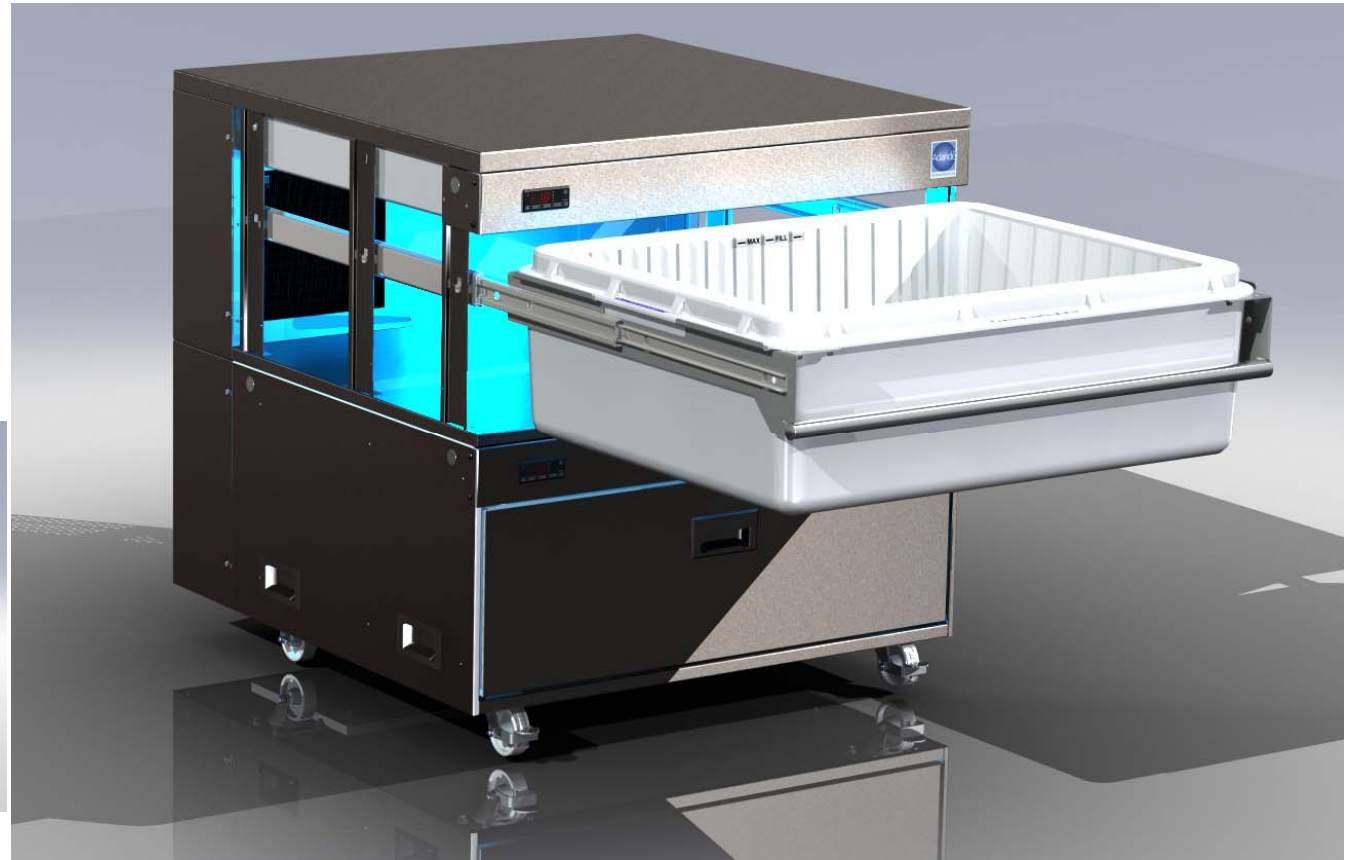


What's Different About Adande Drawers?



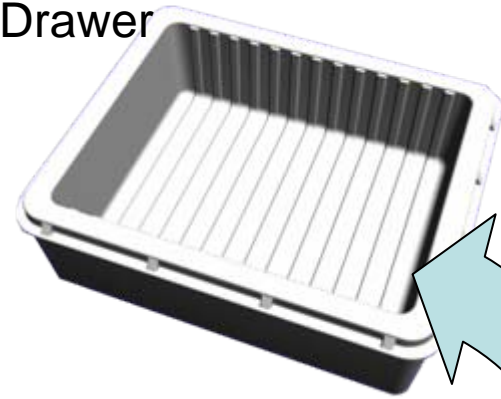
Adande does not need a cabinet to contain the cold air. The stainless steel cladding is for hygiene and decoration

With Adande the cold air is retained in an insulated drawer

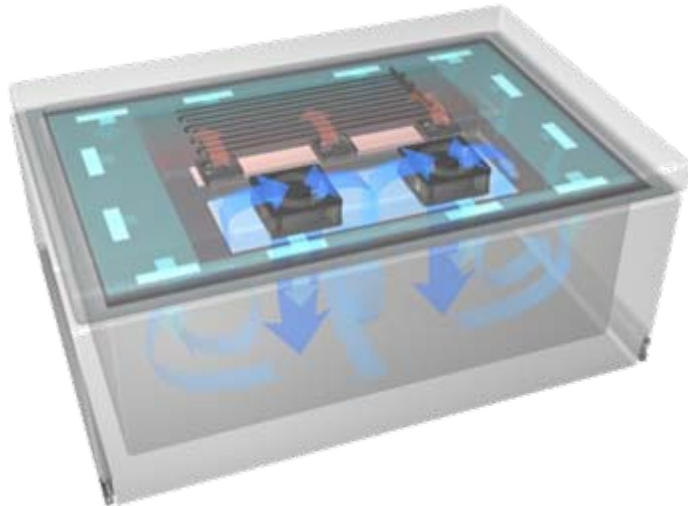
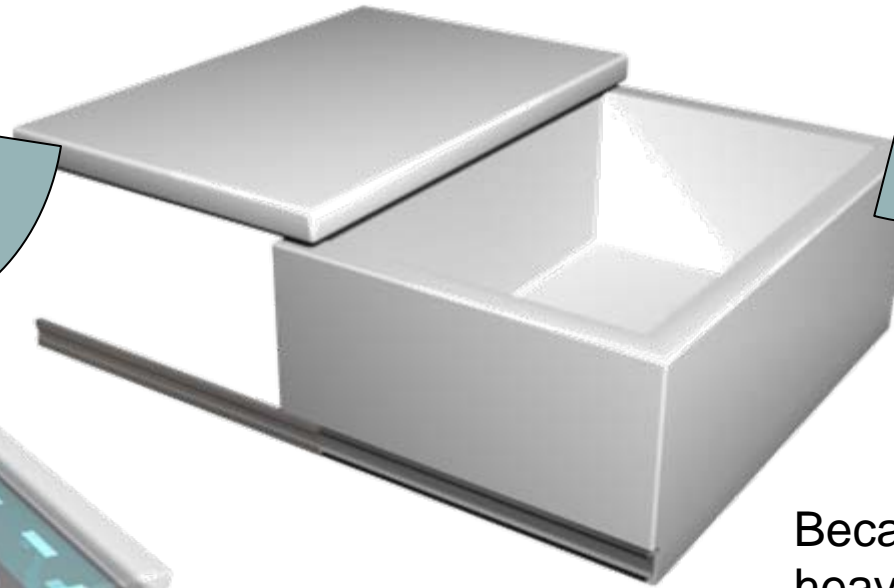


Top drawer closed

Insulated Drawer

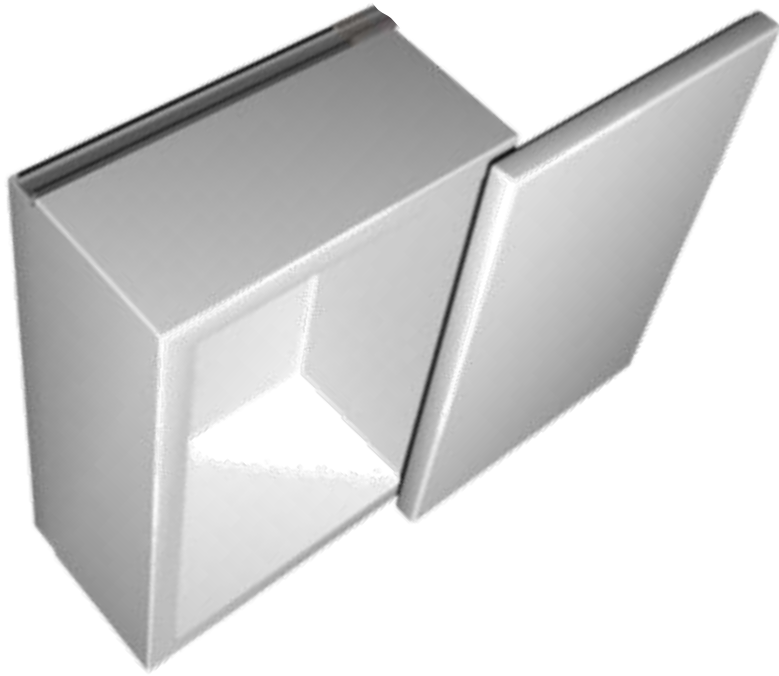


Insulated Lid



Insulated Drawer
and lid in closed
position

Because cold air is heavier it stays in the insulated drawer – it has nowhere else to go.



If our insulated drawer and lid are turned on the side it looks like a conventional upright cabinet with hinged door

But then all the cold air falls out



Conventional drawers are just moving trays that fit inside the cold cabinet.



Conventional drawers trays can sit behind a hinged door (as here). OR have an insulated front.

The conventional drawer trays can be seen quite clearly in this picture.



It is quite apparent that the cold air will fall out when the drawer is opened.

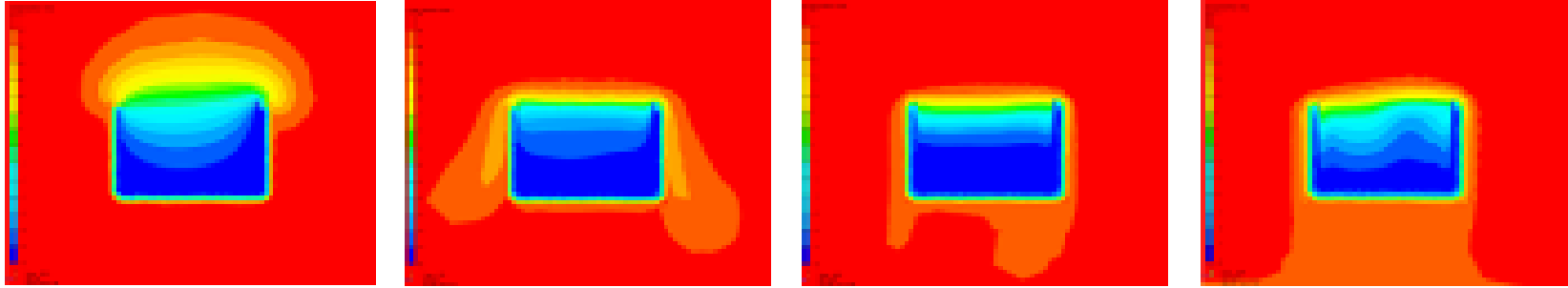


Holes in rear panel for cold air circulation

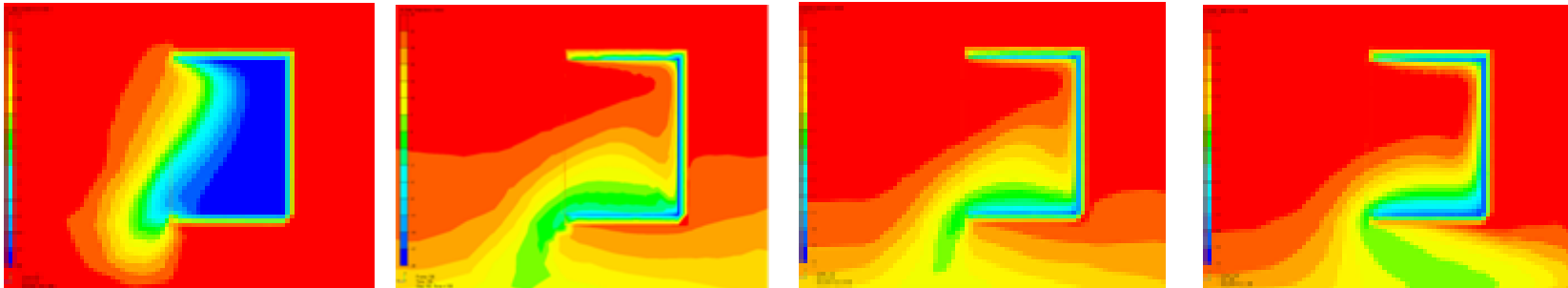
Some conventional drawer trays appear to be solid. But they **MUST** have holes in them to cool the internal space of the tray and are not insulated.

The drawer trays fit inside the cold cabinet and the cold air falls out of both the cabinet and the tray when the drawer is opened.

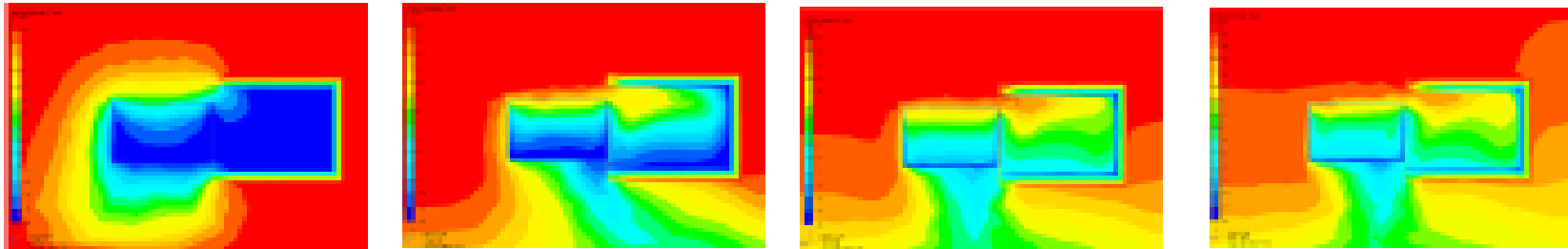
Adande Drawer



Conventional **Door** cabinet



Conventional **Drawer** unit



The cold air stays in the Adande drawer;
it does NOT in a conventional Door or Drawer tray